

## *the New* High Capacity **N-3**

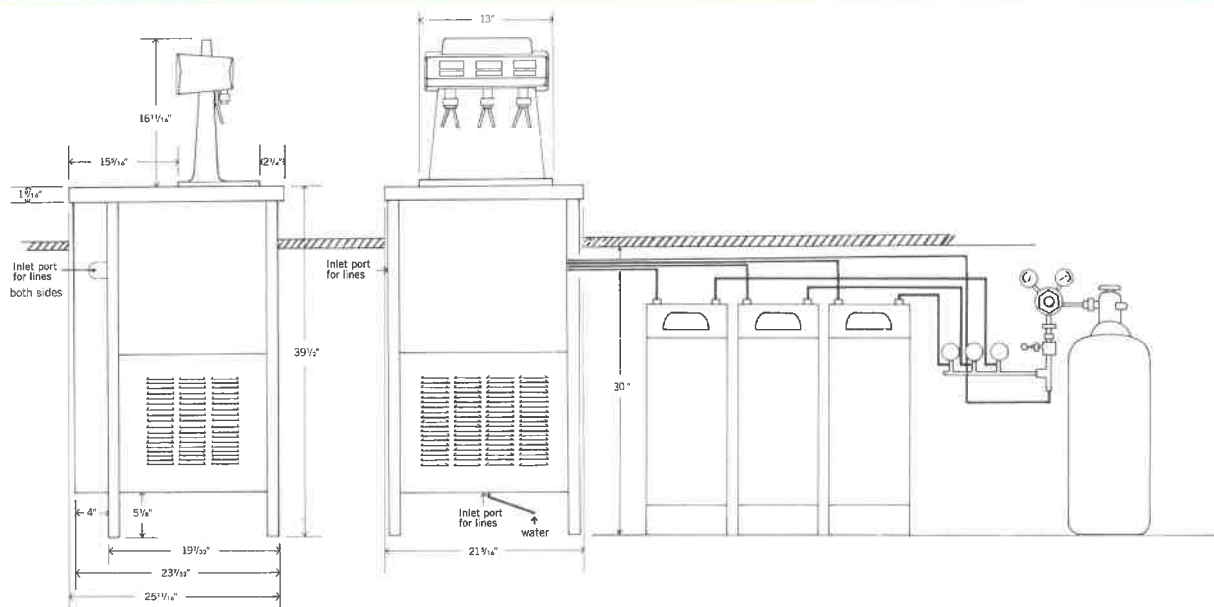
with  
Sealed Ice Bank  
Refrigeration

With the New N-3 you can boost profits with faster service, consistent quality, and a massive reserve of refrigeration and syrups. The N-3 is modern, compact, free standing, and designed specifically for maximum production at a single dispensing station.

- The refrigeration system accumulates a large reserve ice bank during normal dispensing operations, keeps the N-3 ready to meet the heavy demands of your rush periods.
- High efficiency aluminum chip heat transfer system in ice bank compartment eliminates water circulator pumps and motors!
- Sealed ice bank refrigeration minimizes evaporation, insures retention of effective water level.
- Sanitation problems vanish. Sealed ice bank compartment never requires cleaning. NSF approved!
- Short product lines from ice bank to Satellite valves assure high quality casual drink production.



- Attractive, modern styling of Satellite head identifies and merchandises your N-3 beverage dispensing station.
- Exclusive syrup flow control system in Satellite dispensing valves automatically controls pressure variations of both syrup and water.
- Use the tallest cups! There is plenty of clearance below the Satellite valves.
- All carbonated water and syrup heat exchange coils are stainless steel.
- Self-contained refrigeration and carbonation system for maximum compactness and easy installation.
- Flat Formica top provides welcome extra space for serving area.
- Remote, pressurized syrup supply assures adequate reserves for peak requirements.
- Easily opened service panels for quick access to compressor and carbonator compartment.
- No moving parts or electrical components inside the sealed ice bank compartment.
- Six inch floor clearance allows cleaning beneath the N-3.
- Legs adjustable up to one full inch.
- Available only in beautiful hammerloid gray. Vertical leg columns are "brushed" stainless. Top is black, flecked with white.



**SPECIFICATIONS:**

Carbonator: 100 GPH, 1/4 hp, 60 cycle, 110 volt.  
 Compressor: 1/3 hp., hermetically sealed,  
 60 cycle, 110 volt.

Water inlet: SAE 1/2" male flare.  
 CO<sub>2</sub> and Syrup lead connections: 1/4" male flare.  
 NSF Approved.  
 Shipping weight: 400 lbs.

**MANUFACTURED BY:**

**DIXIE-NARCO, INC., Ranson, West Virginia 25438**